

PHYSICAL PLANT – CAMPUS SERVICES
SAFETY NEWSLETTER
OCTOBER 10, 2007

Articles at a glance:

Safety Department Changes

Cal-OSHA Updates

Safety Shoe Recall

Training Events

Safety Tours

AED Update

Changes in the PP-CS Safety Department

Physical Plant-Campus Services safety department is under renovation! Watch the Campus Human Resources Web page for new job listings in the upcoming month!

Cal-OSHA Updates

On September 27, 2006, Cal-OSHA conducted an investigation of 1103 Etcheverry Hall in response to a complaint. Cal-OSHA issued an initial set of citations to PP-CS totaling \$9,235.00. The citations were listed in the Cal-OSHA categories of General, Non-Serious and Serious and addressed issues of training, labeling and work procedures related to asbestos.

Further review of the citations with the University showed only one was applicable to PP-CS, totaling \$300.00. The citation was issued January 19, 2007. PP-CS paid the fine and posted the citation for the required period in accordance with Cal-OSHA guidelines.

In a subsequent visit to 1103 Etcheverry Hall, Cal-OSHA found that the labeling requirements from the prior citation were not satisfied and fined PP-CS \$1500.00.

To meet the Cal-OSHA requirements established during the citation review, the following processes were developed and are officially implemented with the publishing of this newsletter:

***Physical Plant-Campus Services (PP-CS)
Fire Door Work, Labeling and Testing Procedures for Asbestos***

Introduction

Physical Plant-Campus Services establishes all policies and procedures to provide its employees the most healthy and safe working environment possible.

Purpose

This policy/procedure is designed to meet the Title 8 California Code of Regulations sections 1529 and 5194 requirements.

Scope

*This procedure applies to PP-CS lock shop, insulators and abatement personnel.
Steps 1-5 will be completed prior to the start of any work on fire doors by PP-CS personnel.*

Procedure for Fire Door Work

- 1. Locksmith contacts Abatement Manager prior to work on Fire Door*
- 2. Abatement Manager Tests Door*
- 3. Abatement Manager Faxes Test Results to Lock shop*
- 4. Locksmith generates work order for insulators if test is positive*
- 5. Insulator assists locksmith if door hardware must be removed*
- 6. Abatement Manager places Danger Asbestos label on door if test is positive for asbestos and notes door labeled Danger....on chain of custody*
- 7. Abatement Manager labels door asbestos free if the test is negative for asbestos and notes door labeled Asbestos Free on the chain of custody.*
- 8. Chain of custody is maintained by Abatement Manager*
- 9. If security issues mandate a door be repaired/replaced immediately, PP-CS employees will assume the door contains asbestos and contact insulators and the Asbestos Manager.*
- 10. If a door must be replaced without security mandates, carpenter shop will place an assist work order to the Asbestos Manager so that the new door can be labeled properly.*
- 11. Work orders shall be generated to the insulation/abatement shop/Asbestos manager, for removal of asbestos containing doors so that they may be disposed of properly.*

This procedure will be updated as necessary and communicated to applicable personnel in writing.

Doors known to contain asbestos are being labeled appropriately by the Asbestos Manager.

In addition to the above policy, PP-CS in conjunction with campus EH&S developed an “Asbestos Operations and Maintenance Program” (O&M). This program clearly delineates responsibilities and work procedures for all PP-CS personnel that may encounter asbestos in their routine tasks. In the section titled, “Work Practices and Engineering Controls for the Three Types of Asbestos Work”, Item 10 provides the following instruction:

If UC Berkeley personnel performing any form of maintenance activities are uncertain as to whether or no the material they may be disturbing as part of their work contains asbestos, they must stop the work or perform other work and report their concern to their supervisor and contact the Asbestos coordinator. Do not continue the work on the suspect material until it has been determined to be a non-asbestos containing material.

More details on the O&M program will be covered in the asbestos awareness training sessions and O&M program training for specific groups. Training dates and times are located in the training events section of this newsletter.

Cal-OSHA Update #2

On August 30, 2007, PP-CS received a Cal-OSHA notice in reference to a complaint regarding the steam tunnel. An intensive process to upgrade the working conditions involving several campus entities was already in progress. Cal-OSHA reviewed the campus proposal and actions that had already been taken toward improving the work environment and determined that no citation would be issued. As part of the proposed improvement process and in response to the Cal-OSHA notice, PP-CS will conduct Confined Space training reviewing the newly revamped campus confined Space program and conduct heat stress training. PP-CS also posted the notice for the required Cal-OSHA period. Please check the training events section for dates and times.

Safety Boot RECALL

The Timberland Company is voluntarily recalling Timberland PRO Direct Attach Steel Toe Series boots made in the Dominican Republic and sold nationwide between September 2005 and September 2007. Product testing has demonstrated that the boots may not comply with applicable safety standards for compression and impact resistance. Consumers could suffer foot injuries. No injuries have been reported.

Model No. 26002



Model No. 65016
(In the Lehigh line)



Model No. 26038



Model No. 38021

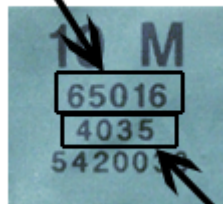


These boots were made in the Dominican Republic and have a four digit date code ending in 35 and beginning with a number from 25-45 (e.g. 2535, 2635...4525), Consult the green loop tag inside the boot to determine whether your boots are subject to this recall. Products made in China ARE NOT subject to this recall.

Green Loop Tag

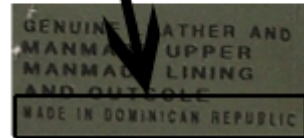


Model Number



Date Code

Country of Origin



Consumers should stop wearing the recalled boots immediately and contact The Timberland Company to receive a free replacement pair of boots. For additional information, contact the Timberland Company toll free Monday-Thursday 8:00 a.m.-5:30 p.m. EST Friday 8:00 a.m.-5:00 p.m. EST, or visit www.timberlandpro.com. 1-800-445-5545 In cooperation with the U.S Consumer Product Safety Commission.

Safety Shoe Poll

Want to have input in next year's safety shoe purchase? Contact your Executive Safety Committee member if you haven't already and let them know if you prefer to purchase your safety shoes and be reimbursed (following guidelines) or if you would prefer a shoemobile come to 2000 Carleton St. and provide service (means a bid process with lowest bidder servicing under contract for a year).

A decision will be made at the end of October 2007. With instructions on purchase November or December 2007.

Training and Events

- 10-9-2007 UC Berkeley Police (UCPD)
Safety Seminar
2000 Carleton St., 246 A&B
Two Sessions: 9:00 a.m. – 10:00 a.m.
Or 10:15 a.m. -11:15 a.m.
- 10-11-207 UCPD Evening Session
5:30 p.m.
Location TBA
- 10-23-2007 Confined Space Training
9:00 a.m. – 10:30 a.m.
2000 Carleton St., 246 A&B
- 10-23-2007 Executive Safety Committee Meeting
3:00 p.m. – 5:00 p.m.
2000 Carleton St, 246 A&B
- 10-26-2007 Asbestos Operation and Maintenance Training
8:00 a.m. – 10:00 a.m.
2000 Carleton St., 246 A&B
**CARPENTERS, LOCKSHOP,
INSULATION/ABATEMENT ONLY**

- 10-30-2007 Scaffold Awareness and Competent Person Training
7:30 a.m. - 3:30 p.m.
2000 Carleton St., 246 A&B
Awareness during the morning session
- 10-31-2007 Scaffold Awareness and Competent Person Training
7:30 a.m. – 3:30 p.m.
2000 Carleton St., 246 A&B
Awareness during the morning session
- 10-31 & 11-1-2007 Custodial and Evening Shift Managers Training
6:00 p.m.-9:00 p.m.
2000 Carleton St., 246 A&B
Dinner will be provided
- 11-6-2007 Asbestos Awareness and Lead Refresher Training
8:00 a.m. – 10:30 a.m.
2000 Carleton St., 246 A&B
- 11-7-2007 Confined Space Training
8:00 a.m. -10:30 a.m.
2000 Carleton St., 246 A&B
- 11-13-2007 Asbestos Awareness and Lead Refresher Training
8:00 a.m. – 10:30 a.m.
2000 Carleton St, 246 A&B
- 11-14-2007 Asbestos Awareness and Lead Refresher Training
9:00 a.m. – 11:30 a.m.
2000 Carleton St., 246 A&B
- 11-28-2007 Asbestos Awareness and Lead **Initial** Training
8:00 a.m. – 10:30 a.m.
2000 Carleton St., 246 A&B
New PP-CS Employees Only

Kick the Habit!

Based on being the campus pilot group for the smoking cessation program, PP-CS employees have been invited to join this fall's program. The program is scheduled as follows:

Readiness to Quit Workshop

October 11, 2007

1:30 p.m. – 2:30 p.m.

Crossroads

Freedom from Smoking 4-week class

October 18- November 8, 2007

1:30 p.m. – 2:30 p.m.

Crossroads

If enough PP-CS employees respond, we will have a class here at 2000 Carleton and on the evening shift. Employees will be eligible for acupuncture or hypnotherapy at no cost, with this program. Repeat participants are welcome! Please contact Angela Wade at 2-9348 with your response.

Safety Tours

Safety Tours are still being conducted by the PP-CS Safety Officer. October is Grounds Services Month.

Automatic External Defibrillators (AED)

PP-CS has been working on purchasing AEDs for several months. PP-CS has received authorization to purchase the units and funding has been requested on its behalf. PP-CS should have AEDs in approximately one month.

Please forward questions on any of the information in this Newsletter to Angela Wade at adwade@berkeley.edu .